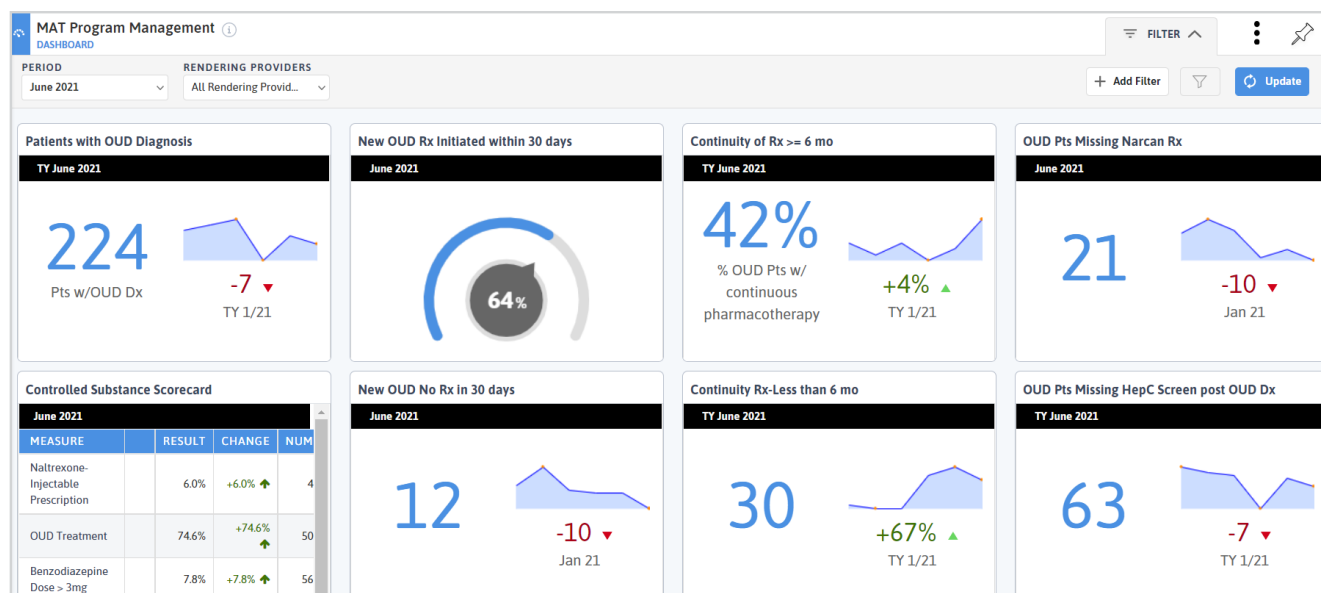


# Controlled Substance Module

## SUPPORTING TEAM-BASED CARE WITH DATA TOOLS

- Challenged with how to integrate the treatment of patients with substance use disorders into your primary care practice?
- Overwhelmed with reporting requirements that need to be done manually?
- Want to improve the treatment and management of patients with chronic pain?
- Tired of double documentation and managing your OBOT program in Excel?
- Want to understand opioid prescribing practices better?

The Azara Controlled Substance Module provides you with tools to more efficiently manage populations at risk - those in treatment for substance use disorder, those at risk for developing a disorder and those with chronic pain. A combination of four registries and measures (24+) will allow you to access relevant clinical information to support team meetings, conduct and evaluate outreach efforts, improve preventive screening efforts and ease the burden of reporting. You can also use dashboards to quickly understand the status of various aspects of your programs.





## Registries

- **Office Based Opioid Treatment** – Monitor all patients enrolled in an OBOT program.
- **Opioid Potential Misuse** – Identify at risk patients based on being ordered an opioid medication.
- **Pain Management** – Monitor patients who have chronic pain.
- **Methadone Medication** – Monitor patient who are on methadone.

## Measures

- **Alcohol Use Disorder Treatment (AUD)**  
Patients ordered a medication for alcohol use disorder (AUD).
- **Opioid Use Disorder Treatment (OUD)**  
Patients ordered a medication for opioid use disorder (OUD).
- **Buprenorphine Prescription**  
Patients with at least one Buprenorphine order provided during the measurement period.
- **Naltrexone - Injectable Prescription**  
Patients with at least one Naltrexone Injectable order provided during the measurement period.
- **Controlled Substance Agreement**  
Patients who have signed a controlled substance agreement.
- **Opioid on Med List**  
Patients with an active opioid medication on medication list.
- **Concurrent Opioid & Benzodiazepine Medications**  
Patients ordered both an Opioid and a Benzodiazepine at the same time.
- **Initiation of Pharmacotherapy Upon New Episode of Opioid Dependence (13-17 and 18+ Years)**  
Patients who initiate pharmacotherapy with at least 1 prescription for opioid treatment medication within 30 days following a diagnosis of opioid dependence (OUD).
- **Initiation & Engagement of AOD Treatment (NQF 0004)**  
Patients 13 years of age and older with a new episode of alcohol and other drug (AOD) dependence who initiated treatment within 14 days of the diagnosis or two or more visits within 30 days of initiation.
- **Continuity of Pharmacotherapy for Opioid, Use Disorder (NQF 3175)**  
Adults aged 18 years and older with pharmacotherapy for opioid use disorder (OUD) who have at least 180 days of continuous treatment.
- **Naloxone Prescription with OUD or Chronic Opioid Therapy**  
Patients with a diagnosis of Opioid Use Disorder (OUD) or Chronic Opioid Therapy with a naloxone prescription in the last 12 months.
- **Medication-Assisted Therapy prescribed for OUD by Provider Report(s)**  
List of unique patients prescribed Medication-Assisted Therapy for Opioid Use Disorder by prescribing provider and a detail report of all prescriptions.

**Interested in learning more about the Azara Controlled Substance Module?**

The Controlled Substance Management module for DRVS requires additional mappings.  
Contact your PCA, HCCN, your Azara Account Rep or [solutions@azarahealthcare.com](mailto:solutions@azarahealthcare.com).

**azara**  
healthcare